

Plissé

SINTESI

©2023

PLISSÉ SINTESI

Tecnolight



SCAN ME

MILAN (IT) / +39 0371 470212 / TECNOLIGHT.COM

ALISSÉ

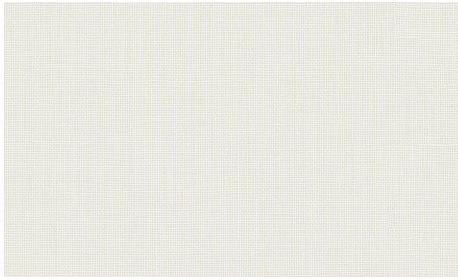
BIANCO - WHITE



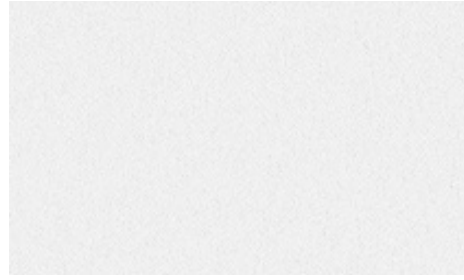
Collezione Collection	N°	Trasparenza Transparency	PG	Altezza cm Width cm	Peso Weight (g/m ²)	Spessore Thickness (mm)	Oekotex Standard 100	Tv - trasmissione luminosa Tv - light transmission	Rs - riflessione solare Rs - solar reflection	As - assorbimento solare As - solar absorption	Ts - trasmissione solare Ts - solar transmission	Ignifugo Flame-retardant	gtot DIN 52022
BOTTARO	860001	○	2	225	102	0,28	●	53%	42%	5%	53%		0,44
CAPRAIA	850001	◐	2	225	86	0,24	●	49%	47%	3%	50%		0,43
CAPRI	800001	◑	3	225	123	0,33	●	40%	55%	6%	39%		0,40
ELBA	750001	◒	3	225	148	0,31	●	46%	51%	4%	45%	●	0,41
FAVIGNANA	760001	◓	2	225	94	0,17	●	32%	57%	7%	36%	●	0,39
LINOSA	830001	◔	1	240	290	0,50	●	48%	47%	6%	47%		0,43
PALMAROLA	870001	◕	4	225	153	0,49	●	43%	52%	6%	42%		0,41
STROMBOLI	730001	◖	3	225	113	0,22	●	27%	60%	11%	29%		0,38

* gtot DIN 52022 segue la DIN 14501-2021 vetro di tipo C / gtot DIN 52022 follows DIN 14501-2021 glass type C

Plissé bianco



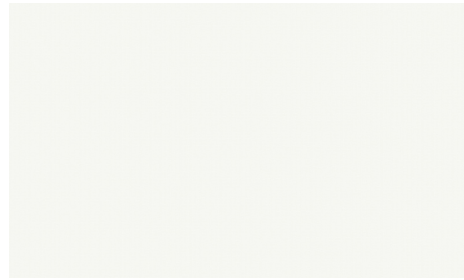
Bottaro 860001



Linosa 830001



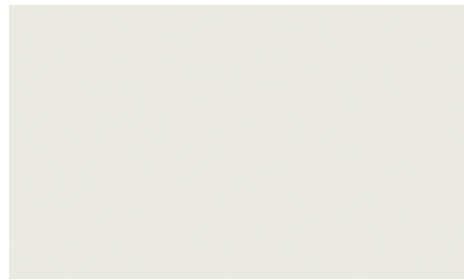
Stromboli 730001



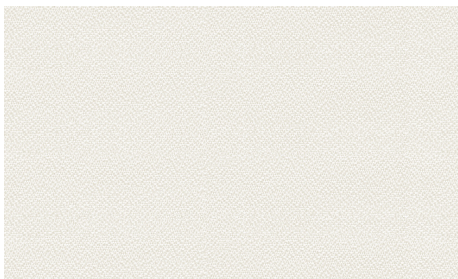
Capraia 850001



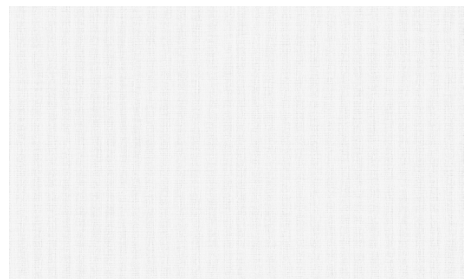
Palmarola 870001



Capri 800001



Favignana 760001



Elba 750001

tru[®]

100% PES riciclato post-consumo

Il poliestere riciclato post-consumo proviene da rifiuti plastici raccolti da varie fonti ambientali.

100% post-consumer recycled PES

Post-consumer recycled polyester is sourced from plastic waste that has been gathered from various environmental sources.



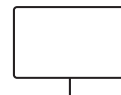
Efficientamento Energetico



Senza PVC



Resistente all'umidità



Adatto alla postazione di lavoro



STANDARD 100
08.0.61035
Hohenstein HTTI

Plissé

BEIGE E ARANCIONE - BEIGE AND ORANGE



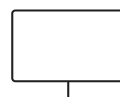
Efficientamento
Energético



Senza PVC



Resistente
all'umidità



Adatto alla
postazione di lavoro

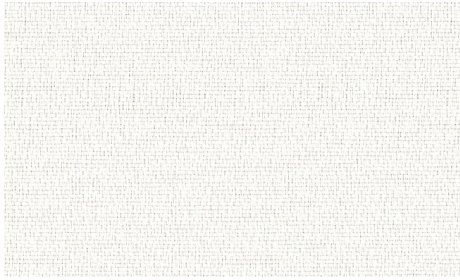


STANDARD
100

08.0.6.1035
Hohenstein HTTI

Collezione Collection	N°	Trasparenza Transparency	PG	Altezza cm Width cm	Peso Weight (g/m ²)	Spessore Thickness (mm)	Oekotex Standard 100	Tv - trasmissione luminosa Tv - light transmission	Rs - riflessione solare Rs - solar reflection	As - assorbimento solare As - solar absorption	Ts - trasmissione solare Ts - solar transmission	Ignifugo Flame-retardant	got DIN 52022
BOTTARO	860003		2	225	102	0,28	●	41%	33%	20%	47%		0,47
BOTTARO	860002		2	225	102	0,28	●	50%	39%	9%	52%		0,45
CAPRI	800002		3	225	123	0,33	●	29%	33%	44%	23%		0,47
CAPRI	800003		3	225	123	0,33	●	6%	33%	44%	23%		0,47
CAPRI	800004		3	225	123	0,33	●	41%	52%	14%	34%		0,40
CAPRI	800005		3	225	123	0,33	●	29%	43%	24%	33%		0,43
ELBA	750002		3	225	148	0,31	●	36%	49%	13%	38%	●	0,42
FAVIGNANA	760004		2	225	94	0,17	●	2%	47%	34%	19%	●	0,42
FAVIGNANA	760006		2	225	94	0,17	●	28%	60%	8%	32%	●	0,38
FAVIGNANA	760007		2	225	94	0,17	●	15%	56%	19%	25%	●	0,39
FAVIGNANA	760008		2	225	94	0,17	●	4%	51%	27%	22%	●	0,41
FAVIGNANA	760002		2	225	94	0,17	●	23%	58%	13%	29%	●	0,38
FAVIGNANA	760003		2	225	94	0,17	●	17%	57%	16%	27%	●	0,39
FAVIGNANA	760005		2	225	94	0,17	●	31%	58%	8%	34%	●	0,39
LINOSA	830002		1	240	99	0,23	●	36%	46%	16%	38%		0,42
LINOSA	830003		1	240	99	0,23	●	33%	41%	21%	38%		0,44
LINOSA	830004		1	240	99	0,23	●	29%	40%	24%	36%		0,44
LINOSA	830005		1	240	99	0,23	●	39%	45%	16%	39%		0,43
LINOSA	830006		1	240	99	0,23	●	15%	35%	35%	30%		0,46
PALMAROLA	870002		4	225	153	0,49	●	43%	52%	6%	42%		0,42
PALMAROLA	870003		4	225	153	0,49	●	25%	43%	23%	34%		0,43
STROMBOLI	730009		3	225	113	0,22	●	14%	54%	22%	24%		0,40

* got DIN 52022 segue la DIN 14501-2021 vetro di tipo C / got DIN 52022 follows DIN 14501-2021 glass type C



Favignana 760005



Favignana 760006



Capri 800004



Linosa 830005



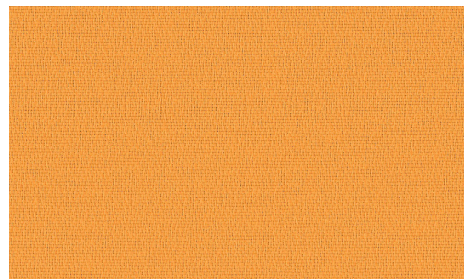
Capri 800005



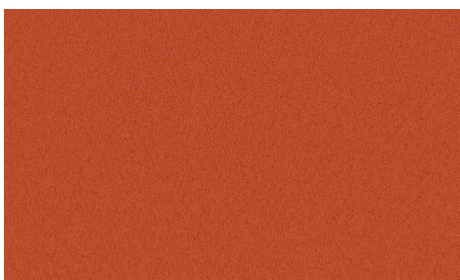
Stromboli 730009



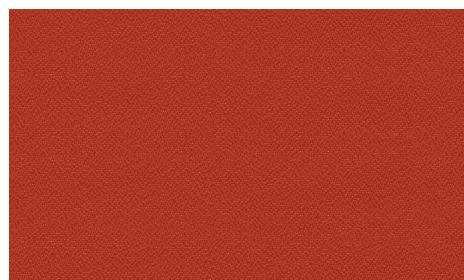
Bottaro 860003



Favignana 760007

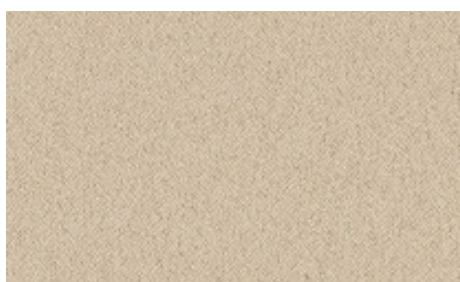


Linosa 830006



Favignana 760008

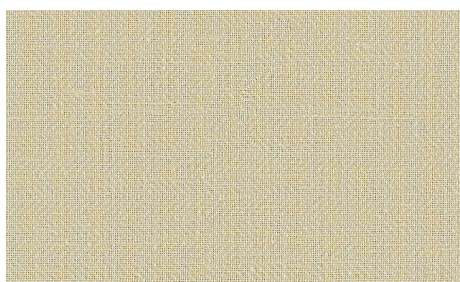
Plissé beige e arancione



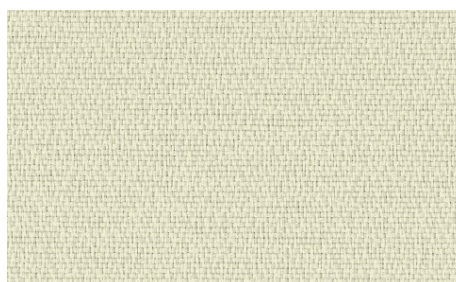
Linosa 830002



Linosa 830003



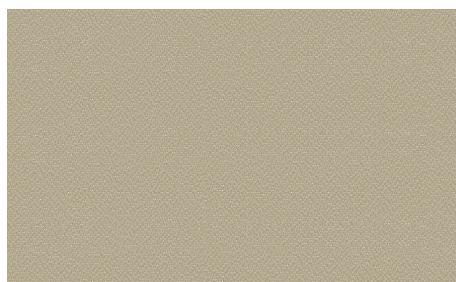
Palmarola 870002



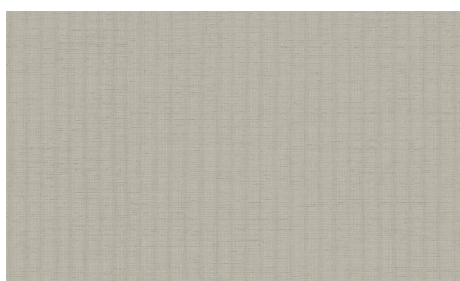
Favignana 760002



Bottaro 860002



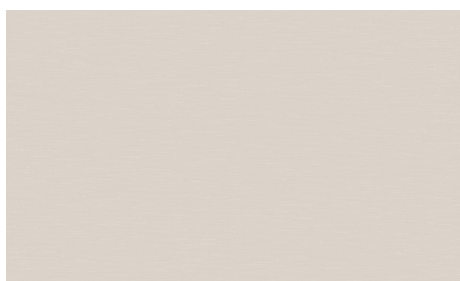
Favignana 760003



Elba 750002



Linosa 830004



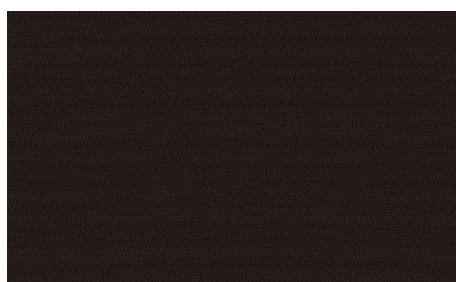
Capri 800002



Palmarola 870003



Capri 800003



Favignana 760004

Plissé

GRIGIO E BLU - GREY AND BLUE



tru@®



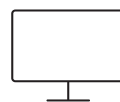
Efficientamento
Energético



Senza PVC



Resistente
all'umidità



Adatto alla
postazione di lavoro



STANDARD
100

08.0.61035
Hohenstein HTTI

Collezione Collection	N°	Trasparenza Transparency	PG	Altezza cm Width cm	Peso Weight (g/m ²)	Spessore Thickness (mm)	Oekotex Standard 100	Tv - trasmissione luminosa Tv - light transmission	Rs - riflessione solare Rs - solar reflection	As - assorbimento solare As - solar absorption	Ts - trasmissione solare Ts - solar transmission	Ignifugo Flame-retardant	gtot DIN 52022
BOTTARO	860004	○	2	225	102	0,28	●	28%	26%	34%	40%		0,42
BOTTARO	860005	○	2	225	102	0,28	●	51%	39%	9%	52%		0,45
CAPRAIA	850002	◐	2	225	86	0,24	●	12%	29%	42%	29%		0,47
CAPRI	800006	◑	3	225	123	0,33	●	2%	28%	52%	20%		0,47
ELBA	750003	◑	3	225	148	0,31	●	16%	39%	32%	29%	●	0,45
ELBA	750004	◑	3	225	148	0,31	●	34%	48%	13%	39%	●	0,42
ELBA	750005	◑	3	225	148	0,31	●	16%	41%	29%	30%	●	0,44
FAVIGNANA	760009	◑	2	225	94	0,17	●	20%	54%	17%	29%	●	0,40
FAVIGNANA	760010	◑	2	225	94	0,17	●	0%	44%	38%	18%	●	0,43
FAVIGNANA	760011	◑	2	225	94	0,17	●	1%	46%	36%	18%	●	0,42
LINOSA	830007	◑	1	240	99	0,23	●	40%	46%	13%	41%		0,43
LINOSA	830008	◑	1	240	99	0,23	●	30%	40%	22%	38%		0,40
LINOSA	830009	◑	1	240	99	0,23	●	2%	24%	53%	23%		0,49
LINOSA	830010	◑	1	240	99	0,23	●	35%	41%	22%	37%		0,44
LINOSA	830011	◑	1	240	99	0,23	●	14%	32%	38%	30%		0,47
PALMAROLA	870004	◑	4	225	153	0,49	●	34%	49%	17%	34%		0,42
PALMAROLA	870005	◑	4	225	153	0,49	●	30%	44%	20%	36%		0,43
PANTELLERIA	780001	◑	3	225	125	0,38	●	28%	47%	24%	29%		0,42
STROMBOLI	730004	◑	3	225	113	0,22	●	6%	54%	26%	20%		0,40
STROMBOLI	730010	◑	3	225	113	0,22	●	6%	52%	28%	20%		0,40

* gtot DIN 52022 segue la DIN 14501-2021 vetro di tipo C / gtot DIN 52022 follows DIN 14501-2021 glass type C

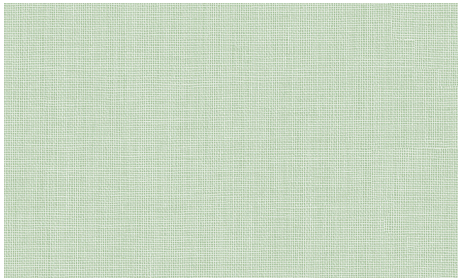


100% PES riciclato post-consumo

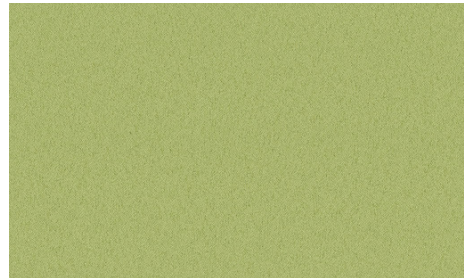
Il poliestere riciclato post-consumo proviene da rifiuti plastici raccolti da varie fonti ambientali.

100% post-consumer recycled PES

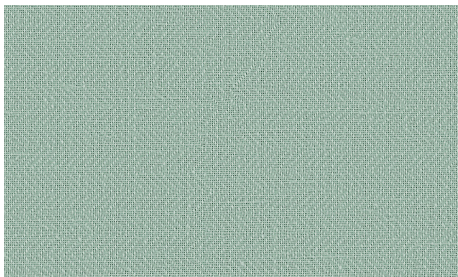
Post-consumer recycled polyester is sourced from plastic waste that has been gathered from various environmental sources.



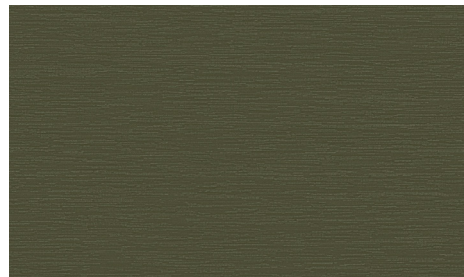
Bottaro 860005



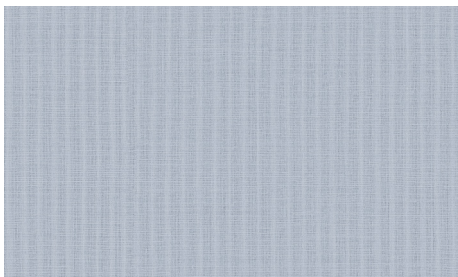
Linosa 830010



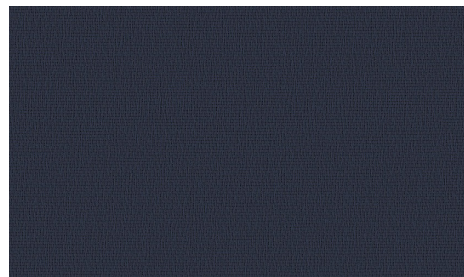
Palmarola 870005



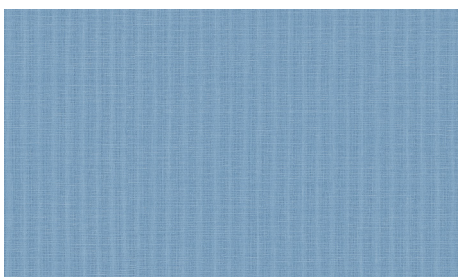
Stromboli 730010



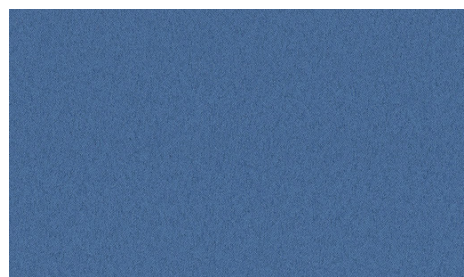
Elba 750004



Favignana 760011



Elba 750005



Linosa 830011

Plissé grigio e blu



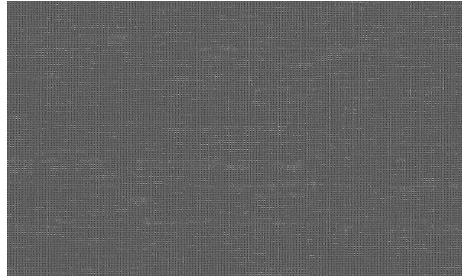
Linosa 830007



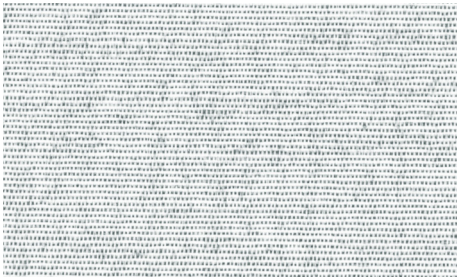
Favignana 760009



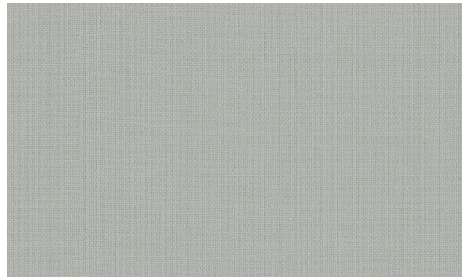
Linosa 830008



Elba 750003



Pantelleria 780001



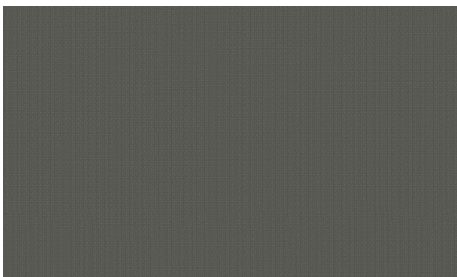
Palmarola 870004



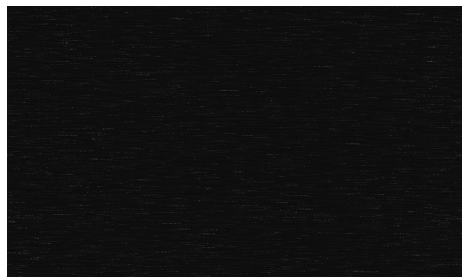
Stromboli 730004



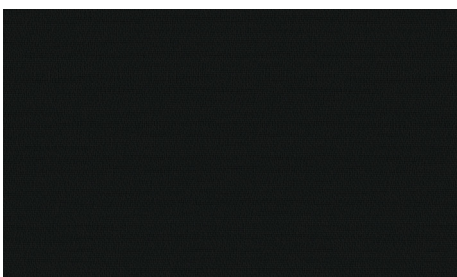
Bottaro 860004



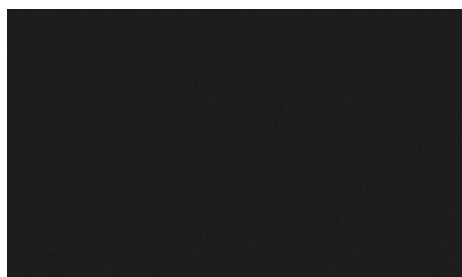
Capraia 850002



Capri 800006



Favignana 760010



Linosa 830009

Pliissé

BLACK-OUT



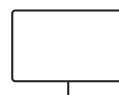
Efficientamento
Energetico



Senza PVC



Resistente
all'umidità



Adatto alla
postazione di lavoro



STANDARD
100

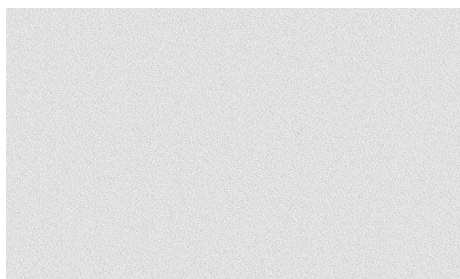
08.0.6.1035
Hohenstein HTTI

Collezione Collection	N°	Trasparenza Transparency	PG	Altezza cm Width cm	Peso Weight (g/m ²)	Spessore Thickness (mm)	Oekotex Standard 100	Tv - trasmissione luminosa Tv - light transmission	Rs - riflessione solare Rs - solar reflection	As - assorbimento solare As - solar absorption	Ts - trasmissione solare Ts - solar transmission	Ignifugo Flame-retardant	gtot DIN 52022
PONZA	770001	●	4	225	254	0,31	●	0%	70%	30%	0%		0,34
PONZA	770002	●	4	225	254	0,31	●	0%	65%	35%	0%		0,36
PONZA	770003	●	4	225	254	0,31	●	0%	56%	44%	0%		0,39
PONZA	770004	●	4	225	254	0,31	●	0%	41%	59%	0%		0,43
PONZA	770005	●	4	225	254	0,31	●	0%	40%	60%	0%		0,44
PONZA	770006	●	4	225	254	0,31	●	0%	38%	62%	0%		0,43
PROCIDA	790001	●	3	240	290	0,58	●	0%	70%	30%	0%		0,34
PROCIDA	790002	●	3	240	290	0,58	●	0%	70%	30%	0%		0,34
PROCIDA	790003	●	3	240	290	0,58	●	0%	70%	30%	0%		0,34
PROCIDA	790004	●	3	240	290	0,58	●	0%	70%	30%	0%		0,34
PROCIDA	790005	●	3	240	290	0,58	●	0%	70%	30%	0%		0,34

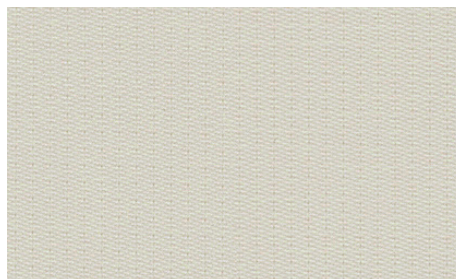
* gtot DIN 52022 segue la DIN 14501-2021 vetro di tipo C / gtot DIN 52022 follows DIN 14501-2021 glass type C



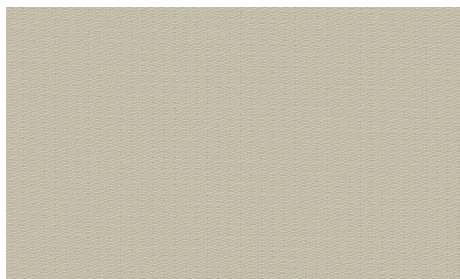
Plissé black-out



Procida 790001



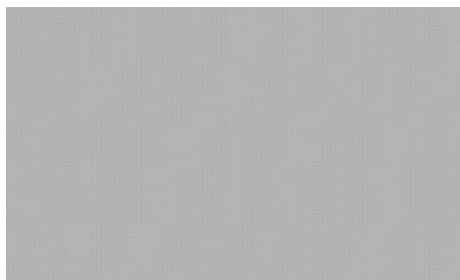
Ponza 770001



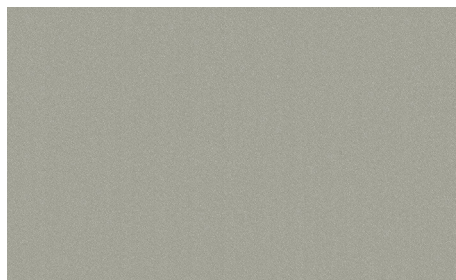
Ponza 770002



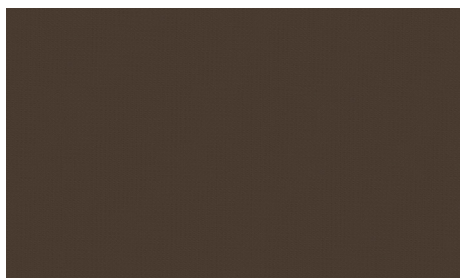
Procida 790002



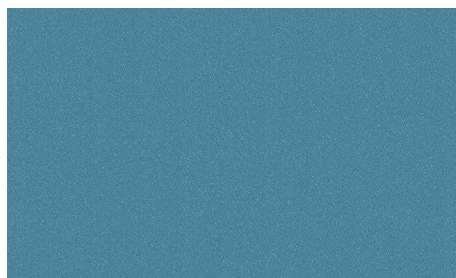
Ponza 770003



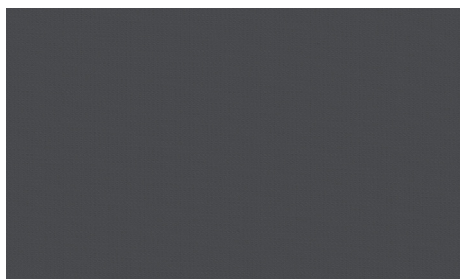
Procida 790003



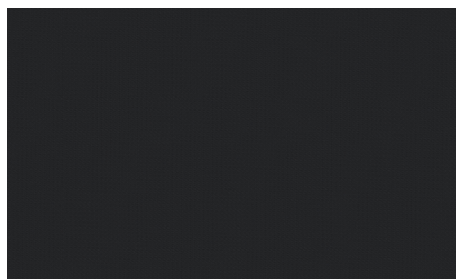
Ponza 770004



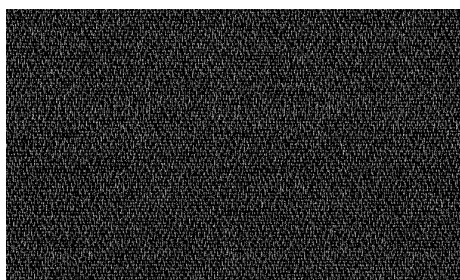
Procida 790004



Ponza 770005



Ponza 770006



Procida 790005

Honeycomb

honeycell®



F.R.



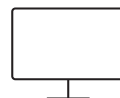
Efficientamento
Energético



Senza PVC



Resistente
all'umidità















Adatto alla
postazione di lavoro



STANDARD
100

08.0.6.1035
Hohenstein HTTI

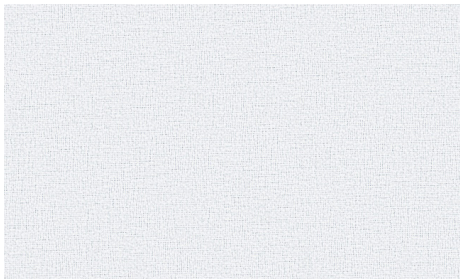
Collezione Collection	N°	Trasparenza Transparency	PG	Altezza cm Width cm	Peso Weight (g/m ²)	Spessore Thickness (mm)	Oekotex Standard 100	Tv - trasmissione luminosa Tv - light transmission	Rs - riflessione solare Rs - solar reflection	As - assorbimento solare As - solar absorption	Ts - trasmissione solare Ts - solar transmission	Ignifugo Flame-retardant	gtot DIN 52022
GIGLIO	810001		4	300	138	0,21	●	35%	60%	6%	34%	●	0,38
GIGLIO	810002		4	300	138	0,21	●	23%	62%	13%	25%	●	0,37
GIGLIO	810003		4	300	138	0,21	●	22%	61%	13%	26%	●	0,37
GIGLIO	810004		4	300	138	0,21	●	13%	58%	26%	16%	●	0,38
GIGLIO	810005		4	300	138	0,21	●	11%	53%	33%	14%	●	0,40
GIGLIO	810006		4	300	138	0,21	●	4%	53%	42%	5%	●	0,40
GIGLIO BO	820001		5	300	166	0,19	●	0%	71%	29%	0%	●	0,34
GIGLIO BO	820002		5	300	166	0,19	●	0%	71%	29%	0%	●	0,34
GIGLIO BO	820003		5	300	166	0,19	●	0%	71%	29%	0%	●	0,34
GIGLIO BO	820004		5	300	166	0,19	●	0%	71%	29%	0%	●	0,34
GIGLIO BO	820005		5	300	166	0,19	●	0%	71%	29%	0%	●	0,34
GIGLIO BO	820006		5	300	166	0,19	●	0%	71%	29%	0%	●	0,34

* gtot DIN 52022 segue la DIN 14501-2021 vetro di tipo C / gtot DIN 52022 follows DIN 14501-2021 glass type C

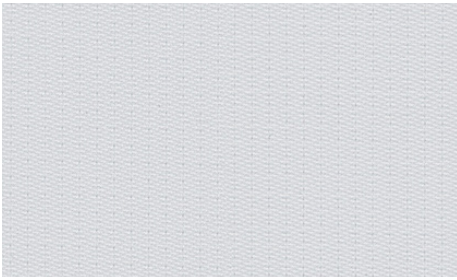
honeycell®

Tende alveolari ad alta efficienza energetica con struttura a nido d'ape per un isolamento e una traspirazione superiori nell'arredamento della casa.
Energy-efficient cellular shades with honeycomb-inspired structure for superior insulation and breathability in home furnishing.

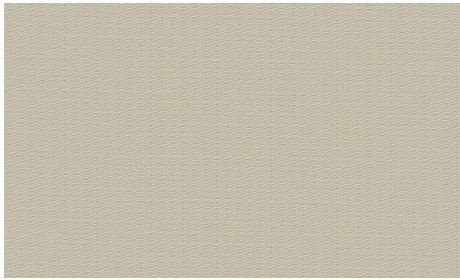
Honeycomb



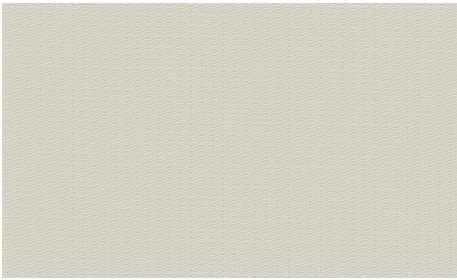
Giglio 810001



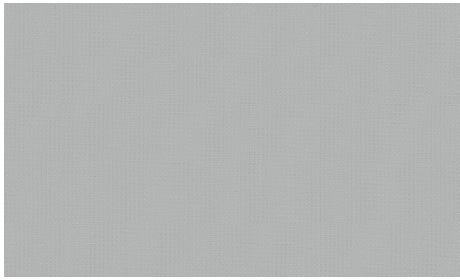
Giglio BO 820001



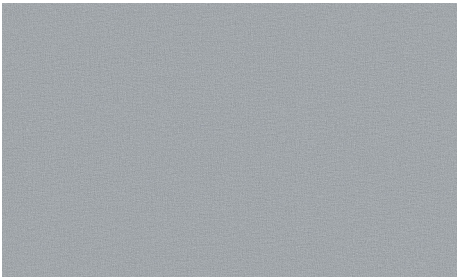
Giglio 810002



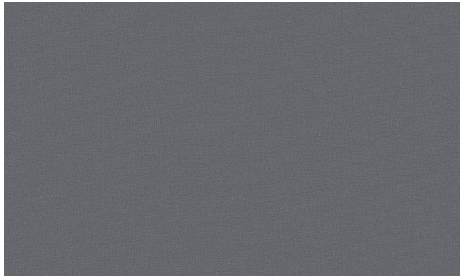
Giglio BO 820002



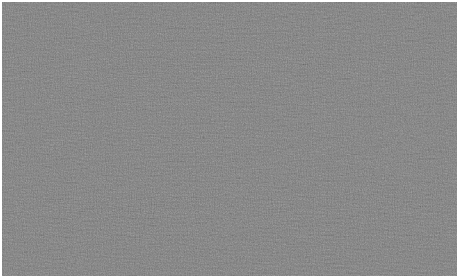
Giglio 810003



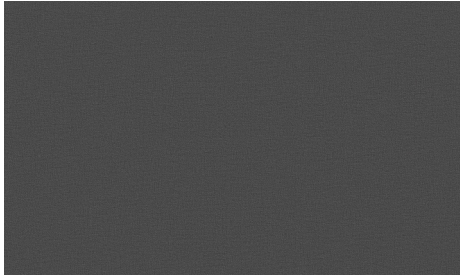
Giglio BO 820003



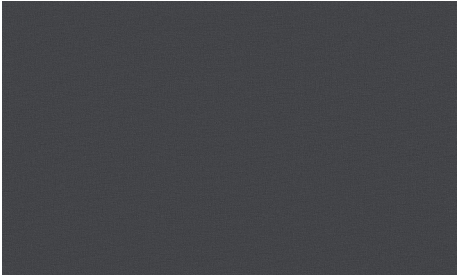
Giglio 810004



Giglio BO 820004



Giglio 810005



Giglio BO 820005



Giglio 810006



Giglio BO 820006

Simboli di descrizione

Symbol description



Trasparente
Transparent



Semi-trasparente
Semi-transparent



Non trasparente
Non-transparent



Black-out
Black-out

©2023

PLISSÉ SINTESI

Tecnolight



SCAN ME

MILAN (IT) / +39 0371 470212 / TECNOLIGHT.COM